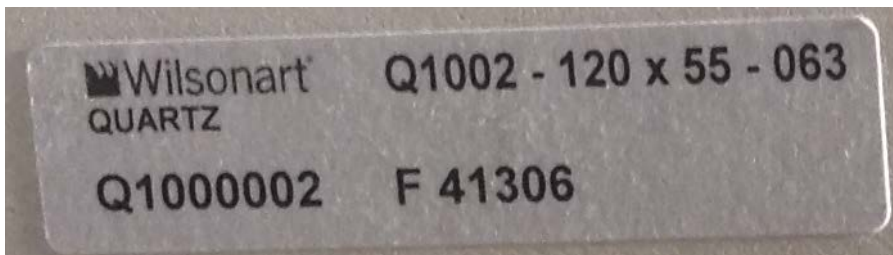


The following illustrations provided can be utilized in the collection of the Product Identification Number (PIN), information for the identification purposes for Wilsonart® Quartz slabs.

Below are the three types of labels you can find on all Wilsonart Quartz Slabs.

### Product Identification Number (PIN) Information

- **Label #1 (Discontinued)**

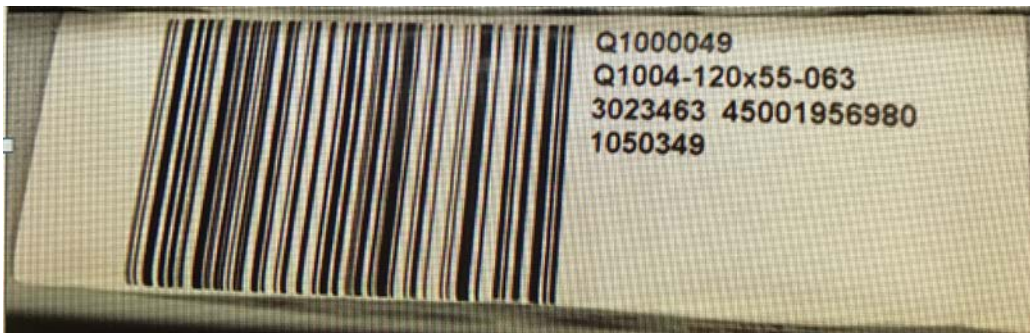


Product Code Number (PC): Q1002

Production Identification Number (PIN): F41306

Dimensions: 120 x 55"

- **Label #2**



Product Code Number (PC): Q1004

Production Identification Number (PIN): 3023463 - 45001956980

Dimensions- 120x55"

- **Label #3**



Product Code Number (PC): Q4011  
Production Identification Number (PIN): 2034 - H00054  
Dimensions: 120 x 55"

**Document/Evaluation Process:**

The labels located on Wilsonart Quartz slabs provide good information; design identification, product identification, and production information to be used by distribution points, fabricators, and customers. However, when submitting a claim through the Technical Service Part A system, description of issue and PIN-product identification number from label is critical in evaluating claim and providing determination on the Part A submitted.

A Wilsonart representative is responsible for the submission of Part A and should have detailed information of issue, PIN-product identification number, photos and any other vital information associated with claim.

**Wilsonart Technical & Fabrication Services Department**

2501 Wilsonart Drive  
P.O. Box 6110  
Temple, TX 76501-6110  
Phone: 800-433-3222  
Fax: 254-207-3209